



GMT MONTHLY MEMBERSHIP PROGRESS REPORT

Results as of: 10/31/2019

Multiple District 21

LOCATION: ARIZONA

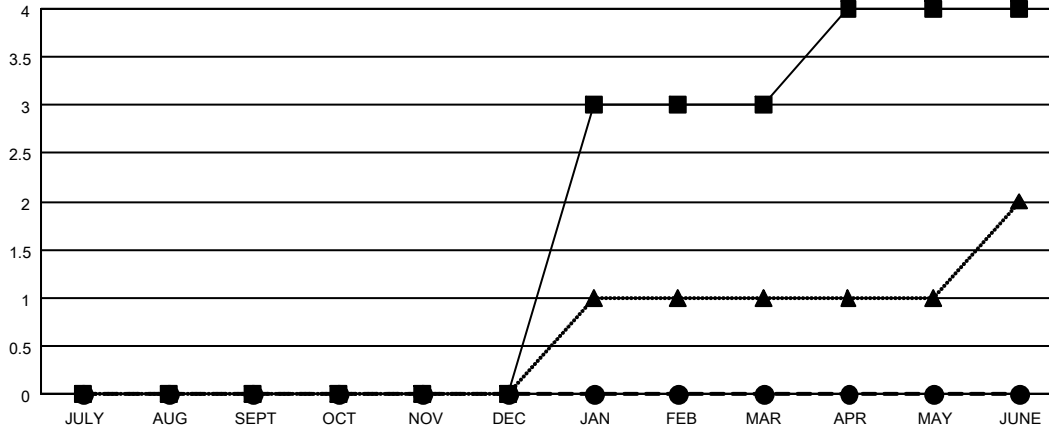
GMT: OPEN

GMT CA 1

Clubs			
RESULTS FOR 2019-2020			
QUARTER	NEW CLUB GOAL	NEW CLUBS	DROPPED CLUBS
JULY/AUG/SEPT	0	0	4
OCT/NOV/DEC	0	0	0
JAN/FEB/MAR	3	0	0
APR/MAY/JUNE	1	0	0

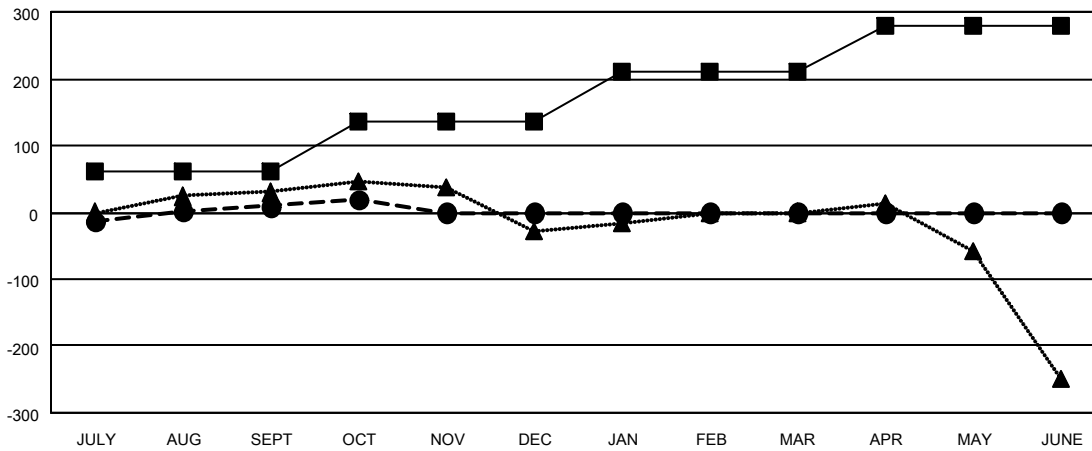
Members			
RESULTS FOR 2019-2020			
QUARTER	MEMBER GROWTH NET GOAL	MEMBER GROWTH ACTUAL	DROPPED MEMBERS ACTUAL (including transfers)
JULY/AUG/SEPT	62	111	91
OCT/NOV/DEC	75	33	19
JAN/FEB/MAR	73	0	0
APR/MAY/JUNE	70	0	0

GOALS AND ACTUAL NEW CLUBS CUMULATIVE



- - CURRENT YEAR GOALS FOR NEW CLUBS
- - CURRENT YEAR ACTUAL NEW CLUBS
- ▲ - LAST YEAR ACTUAL NEW CLUBS

GOALS AND ACTUAL MEMBERS CUMULATIVE



- - MEMBER GROWTH NET GOAL
- - MEMBER GROWTH ACTUAL
- ▲ - LAST YEAR MEMBERSHIP ACTUAL

DROPPED CLUBS: 4	40 CLUBS OF 113 ADDED 1 OR MORE NEW MEMBERS	<u>GENDER DISTRIBUTION</u>
		MALE 1,590 (56.05%)
		FEMALE 1,247 (43.95%)
<u>DROPPED MEMBERS</u>	CLICK HERE FOR CUMULATIVE MEMBERSHIP DATA	TOTAL FAMILY UNIT MEMBERS 788
DECEASED 11		FAMILY MEMBERS PAYING HALF DUES 411
CLUB CANCELLED 45		
OTHER 54		
TOTAL 110		